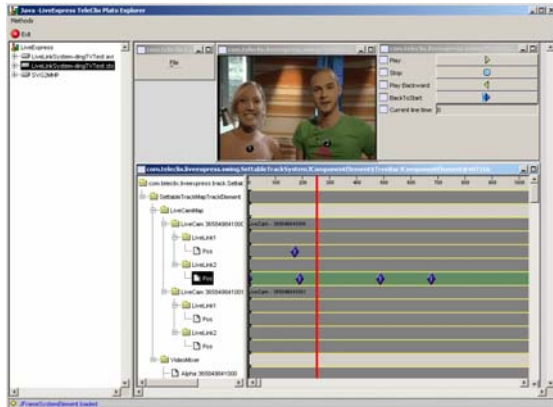


TeleClix™ LiveExpress 1.0

A high performing authoring tool

LiveExpress is an authoring tool for static as well as for time-based contents. Thereby, the entry, the processing and the display of data, of the so-called tracks, is made possible.



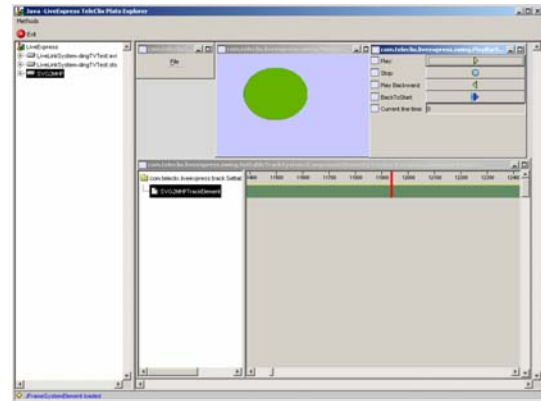
The LiveExpress authoring tool is conceived both for TV editors and iTV designers.

As a 100 % java programme, LiveExpress is executable under most operating systems (Windows, Linux, Max etc.). The look and feel is adapted to the distinct operating system. LiveExpress follows the modern GUI conventions and provides the user with a drag & drop explorer. Naturally, also context sensitive help functions are offered.

With the LiveExpress the user has the possibility to generate and edit any tracks. Information, for example the position data of LiveLinks, can then be generated time-based with the help of a timeline and displayed on suitable monitor windows.

LiveExpress disposes of several import and export functions, so that it can be integrated in the process of modern iTV application developments.

Currently, the import of SVG, SMIL, Flash, SWF and MS PowerPoint in order to create MHP applications for interactive TV formats is feasible.



LiveExpress is therefore an ideal tool for the post-productive generation of data.

In addition, live data, received via UDP or TCP/IP, can be processed by LiveExpress. Both post-productive data and live data can be made available for a synchronous broadcasting. The playout to the most well-known synchronous playout servers is supported. A perfect synergy results from the co-operation with the TeleClix LiveCaster.

TeleClix GmbH
Rosa-Luxemburg-Str. 4d
14482 Potsdam
Germany

Phone: +49(0)33187000790
Fax: +49(0)33187000796
E-mail: info@teleclix.com
www.teleclix.com